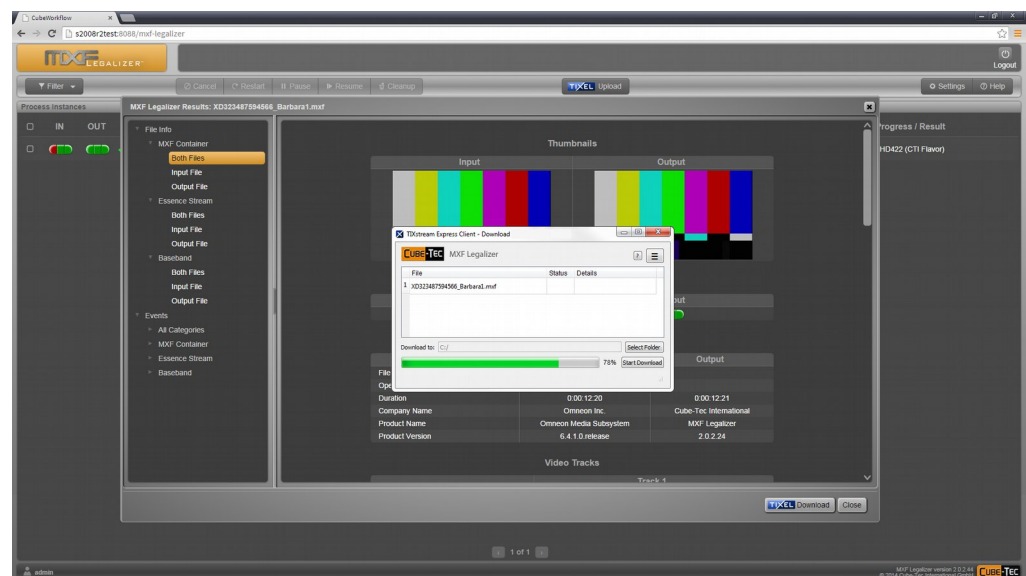


Online Service for Correction of Media Files with Fast Data Transfer

Hannover, Bremen, 09. September 2014

Cube-Tec International is specialized in quality assurance solutions for large media archives. MXF Legalizer converts video files of different sources into standards compliant MXF files that interoperate perfectly with products from different manufacturers. Broadcasters and large media service providers usually install MXF Legalizer in their internal networks. However, various production houses asked for a cloud-based SaaS solution. Therefore **MXF Legalizer Online Service** has been set up. Interested parties can apply for a free test license during the pilot phase.

TIXstream Express (TXE), provided by data transfer specialist TIXEL, is used for accelerated up- and downloads of MXF files. Seamlessly integrated into this service, TXE enables easy, fast and secure transfer of large files over wide area networks.



Jörg Houpert, Head of Technology, Cube-Tec International: “With the MXF Legalizer Online Service our clients would like to correct media files of up to 100 GB in size – fast, safe and without hassle. With TIXEL, we have found the right partner for the data transfer component. TIXstream Express is a robust and lightweight file transfer solution – easy to integrate into our workflow engine and transparent to the user. The user benefits from reduced up- and downloads times, especially over larger distances.”

“Transferring big files over large geographical distances can be very challenging. A lot of today's business processes need to integrate distributed services at different locations. Cube-Tec's MXF Legalizer Online Service represents a new type of state-of-the-art tools making technology available as a cloud-based service. This is only feasible thanks to cost efficient, secure and high-speed WAN file transfer.

Collaborating with Cube-Tec is very efficient since our core competences complement each other perfectly.” says Andreas Aust, CTO of TIXEL.

Cube-Tec and TIXEL are both active members of the FIMS Initiative of EBU/AMWA. They are showing their solution during IBC 2014, September 12-16 in Amsterdam.

On Monday, September 15th at 13:00 they give a joint presentation at the EBU Village, booth 10.F20.

Cube-Tec booth 5.C41,
TIXEL booth 8.A97

About Cube-Tec

Cube-Tec International is a pioneer in quality-supervised, file-based processing for large-scale media archives. For more than 15 years Cube-Tec supports clients with innovative, customized solutions for media migration and error monitoring. Cube-Tec offers state-of-the-art products for content verification and process automation in modern file-based workflows using multiple quality evaluation methods. Cube-Tec's technology is licensed to companies like Adobe and Steinberg Media Technologies. Also, Cube-Tec is a member of various European research projects and international media standardisation boards like SMPTE, AMWA and EBU.

About TIXEL

TIXEL is a German-based vendor of solutions for high-speed transfer in wide area multi-gigabit IP networks. TIXEL products are primarily used to optimize data-intensive global applications like cloud services, big data exchange, and media production.

Contact

Cube-Tec International GmbH, Bremen, Germany, www.cube-tec.com,
Tom Lorenz, t.lorenz@cube-tec.de, Tel. +49 421 20144-0

TIXEL GmbH, Hannover, Germany, www.tixeltec.com,
Ralf Einhorn, re@tixeltec.com, +49 511 165960-0